

30  
double-sided  
adhesive tape

40  
adhesive tape kapton

20  
PCM

10  
LP400718

60  
wire black (-)  
AWG30 UL1571

50  
wire red (+)  
AWG30 UL1571

40  
adhesive tape  
kapton (2x)

4.0  $+0.3$   
 $-0.3$

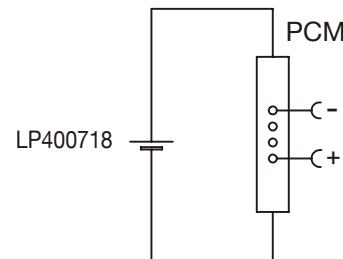
7  $+0.5$   
 $-0.5$

19  $+1.0$   
 $-1.0$

50  $+3.0$   
 $-3.0$

LiPo Battery 3.7V  
LP400718 40mAh

Circuit Diagram



## Specification

Lithium Polymer Battery Pack LP400718 40mAh 3.7V with Protection Circuit Module (PCM)  
This data sheet describes the requirements and properties of lithium polymer rechargeable battery pack manufactured by LiPol Battery Co., Ltd - China

### Mechanical Characteristics

Cell	▶ LP400718
PCM	▶ Yes
NTC	▶ No
Configuration	▶ 1S1P
Weight	▶ appr. 0.8g

### Electrical Specification

Rated Capacity	▶ 40mAh min, 40mAh typ.
Nominal Voltage	▶ 3.7V
Wat-Hour Rating	▶ 0.148Wh
Max. Operating Voltage Range	▶ 2.75V to 4.20V
Max. Charge Voltage	▶ 4.2V $\pm$ 50mV
Max. Charge Current	▶ 20mA
Standard Charge Current	▶ 8mA
Max. Continuous Discharge Current	▶ 40mA
Standard Discharge Current	▶ 20mA
Discharge Cut Off	▶ 2.75V
Internal Impedance	▶ <200m $\Omega$
Expected Cycle Life @ (0.5C/0.5C) @ 23 $\pm$ 5 $^{\circ}$ C	▶ 500 cycles $\geq$ 80%

### Cell Protection

Overcharge Detection	▶ 4.275 $\pm$ 50mV (0.7 to 1.3sec. delay, release 4.275V $\pm$ 50mV)
Overdischarge Detection	▶ 2.75V $\pm$ 50mV (14 to 26msec. delay, resume 2.50V $\pm$ 50mV)
Overcurrent Detection	▶ 0.5A to 1A (8 to 16msec. delay)

### Ambient Conditions

Charge Temp. Range	▶ 0 to +45 $^{\circ}$ C
Discharge Temp. Range	▶ -20 to +60 $^{\circ}$ C
Storage Temp. Range	▶ 1 year at -20 to +30 $^{\circ}$ C >70%
	▶ 3 months at -20 to +45 $^{\circ}$ C >70%
	▶ 1 month at -20 to +60 $^{\circ}$ C >70%
Humidity	▶ 65 $\pm$ 20%RH

### Environmental and Safety

Please follow LiPol Handling and Safety Precautions for Lithium Polymer Battery.  
This battery meets the requirements of Battery Directives, and the battery parts are IEC62133-2-2017 & RoHS-Compliant. For more safety precautions and performance standards, please go to [www.lipolbattery.com/support.html](http://www.lipolbattery.com/support.html)

Mae in mm All dimensions in mm	Freimatoleranzen Generaltolerances	Date Erst. / Orig	Name Xie Qingfang	<b>LiPol Battery</b>	Index
Als Betriebsgeheimnis anvertraut, alle Rechte vorbehalten	up to 6 · 0,1 over 6 up to 30 · 0,2	Gepr./check	01.04.2021 Guo Daxia		
Proprietary data, company confidential, all rights reserved.	over 30 up to 100 · 0,3 over 100 · 0,5	Benennung/ Designation LP400718		Zchnng. / Dwg. Nr. 3 FD_0718_40	
		Origin:	support@lipolbattery.com	www.LiPolBattery.com	