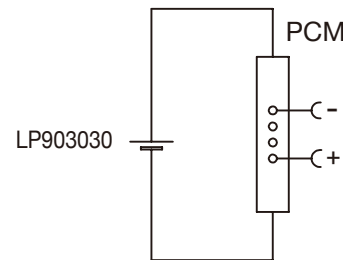


Circuit Diagram



Specification

Lithium Polymer Battery Pack LP601624 180mAh 3.7V with Protection Circuit Module (PCM)
This data sheet describes the requirements and properties of lithium polymer rechargeable battery pack manufactured by LiPol Battery Co., Ltd - China

Mechanical Characteristics

Cell	▶ LP601624
PCM	▶ Yes
NTC	▶ No
Configuration	▶ 1S1P
Weight	▶ appr. 3.6g

Electrical Specification

Rated Capacity	▶ 180mAh min, 185mAh typ.
Nominal Voltage	▶ 3.7V
Wat-Hour Rating	▶ 0.666Wh
Max. Operating Voltage Range	▶ 2.75V to 4.20V
Max. Charge Voltage	▶ 4.2V ±50mV
Max. Charge Current	▶ 90mA
Standard Charge Current	▶ 36mA
Max. Continuous Discharge Current	▶ 180mA
Standard Discharge Current	▶ 90mA
Discharge Cut Off	▶ 2.75V
Internal Impedance	▶ <200mΩ
Expected Cycle Life @ (0.5C/0.5C) @ 23±5°C	▶ 500 cycles ≥ 80%

Cell Protection

Overcharge Detection	▶ 4.275 ±50mV (0.7 to 1.3sec. delay, release 4.275V ±50mV)
Overdischarge Detection	▶ 2.75V ±50mV (14 to 26msec. delay, resume 2.50V ±50mV)
Overcurrent Detection	▶ 1.5A to 2.5A (8 to 16msec. delay)

Ambient Conditions

Charge Temp. Range	▶ 0 to +45°C
Discharge Temp. Range	▶ -20 to +60°C
Storage Temp. Range	▶ 1 year at -20 to +30°C >70%
	▶ 3 months at -20 to +45°C >70%
	▶ 1 month at -20 to +60°C >70%
Humidity	▶ 65 ±20%RH

Environmental and Safety

Please follow LiPol Handling and Safety Precautions for Lithium Polymer Battery. This battery meets the requirements of Battery Directives, and the battery parts are IEC 62133 & RoHS-Compliant. For more safety precautions and performance standards, please go to www.lipolbattery.com/support.html

Mae in mm All dimensions in mm	Freimatoleranzen Generaltolerances	Date Erst. / Orig	Name Xie Qingfang	LiPol Battery	Index
Als Betriebsgeheimnis anvertraut, alle Rechte vorbehalten	up to 6 · 0,1 over 6 up to 30 · 0,2	Gepr./check 30.06.2021	Guo Daxia		
Proprietary data, company confidential, all rights reserved.	over 30 up to 100 · 0,3 over 100 · 0,5	Benennung/ Designation LP601624		Zchg. / Dwg. Nr. 3 FD_1624_60	
			Origin:	support@lipolbattery.com	www.LiPolBattery.com