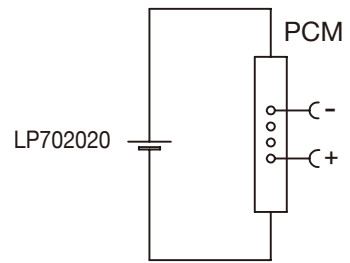


Circuit Diagram



Specification

Lithium Polymer Battery Pack LP702020 200mAh 3.7V with Protection Circuit Module (PCM)
 This data sheet describes the requirements and properties of lithium polymer rechargeable battery pack manufactured by LiPol Battery Co., Ltd - China

Mechanical Characteristics

- Cell ▶ LP702020
- PCM ▶ Yes
- NTC ▶ No
- Configuration ▶ 1S1P
- Weight ▶ appr. 4g

Electrical Specification

- Rated Capacity ▶ 200mAh min, 205mAh typ.
- Nominal Voltage ▶ 3.7V
- Wat-Hour Rating ▶ 0.74Wh
- Max. Operating Voltage Range ▶ 2.75V to 4.20V
- Max. Charge Voltage ▶ 4.2V ±50mV
- Max. Charge Current ▶ 100mA
- Max. Continuous Discharge Current ▶ 200mA
- Discharge Cut Off ▶ 2.75V
- Internal Impedance ▶ <200mΩ
- Expected Cycle Life ▶ 500 cycles ≥ 80%
- @ (0.5C/0.5C) @ 23±5°C

Cell Protection

- Overcharge Detection ▶ 4.275 ±50mV (0.7 to 1.3sec. delay, release 4.275V ±50mV)
- Overdischarge Detection ▶ 2.75V ±50mV (14 to 26msec. delay, resume 2.50V ±50mV)
- Overcurrent Detection ▶ 2A to 4.5A (8 to 16msec. delay)

Ambient Conditions

- Charge Temp. Range ▶ 0 to +45°C
- Discharge Temp. Range ▶ -20 to +60°C
- Storage Temp. Range ▶ 1 year at -20 to +30°C >70%
- ▶ 3 months at -20 to +45°C >70%
- ▶ 1 month at -20 to +60°C >70%
- ▶ 65 ±20%RH

Environmental and Safety

Please follow LiPol Handling and Safety Precautions for Lithium Polymer Battery. This battery meets the requirements of Battery Directives, and the battery parts are IEC 62133 & RoHS-Compliant. For more safety precautions and performance standards, please go to www.lipolbattery.com/support.html

Mae in mm	Freimatoleranzen	Date	Name	LiPol Battery	Zchg. / Dwg. Nr.	Index
All dimensions in mm	Generaltolerances	Erst. / Orig	24.06.2021			
Als Betriebsgeheimnis anvertraut, alle Rechte vorbehalten	up to 6	0,1	Gepr./check	24.06.2021	Guo Daxia	3
	over 6 up to 30	0,2	Benennung/ Designation		FD_2020_71	
Proprietary data, company confidential, all rights reserved.	over 30 up to 100	0,3	LP702020		support@lipolbattery.com	www.LiPolBattery.com
	over 100	0,5	Origin:			