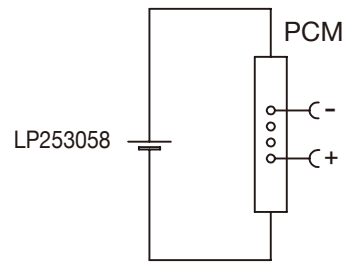


Circuit Diagram



# Specification

Lithium Polymer Battery Pack LP253058 500mAh 3.7V with Protection Circuit Module (PCM)  
 This data sheet describes the requirements and properties of lithium polymer rechargeable battery pack manufactured by LiPol Battery Co., Ltd - China

## Mechanical Characteristics

- Cell ▶ LP253058
- PCM ▶ Yes
- NTC ▶ No
- Configuration ▶ 1S1P
- Weight ▶ appr. 10g

## Electrical Specification

- Rated Capacity ▶ 500mAh min, 510mAh typ.
- Nominal Voltage ▶ 3.7V
- Wat-Hour Rating ▶ 1.85Wh
- Max. Operating Voltage Range ▶ 2.75V to 4.20V
- Max. Charge Voltage ▶ 4.2V ±50mV
- Max. Charge Current ▶ 250mA
- Standard Charge Current ▶ 100mA
- Max. Continuous Discharge Current ▶ 500mA
- Standard Discharge Current ▶ 250mA
- Discharge Cut Off ▶ 2.75V
- Internal Impedance ▶ <200mΩ
- Expected Cycle Life @ (0.5C/0.5C) @ 23±5°C ▶ 500 cycles ≥ 80%

## Cell Protection

- Overcharge Detection ▶ 4.275 ±50mV (0.7 to 1.3sec. delay, release 4.275V ±50mV)
- Overdischarge Detection ▶ 2.75V ±50mV (14 to 26msec. delay, resume 2.50V ±50mV)
- Overcurrent Detection ▶ 2.5A to 4.5A (8 to 16msec. delay)

## Ambient Conditions

- Charge Temp. Range ▶ 0 to +45°C
- Discharge Temp. Range ▶ -20 to +60°C
- Storage Temp. Range ▶ 1 year at -20 to +30°C >70%
- ▶ 3 months at -20 to +45°C >70%
- ▶ 1 month at -20 to +60°C >70%
- Humidity ▶ 65 ±20%RH

## Environmental and Safety

Please follow LiPol Handling and Safety Precautions for Lithium Polymer Battery. This battery meets the requirements of Battery Directives, and the battery parts are IEC 62133 & RoHS-Compliant. For more safety precautions and performance standards, please go to [www.lipolbattery.com/support.html](http://www.lipolbattery.com/support.html)

Mae in mm	Freimatoleranzen	Date	Name	<b>LiPol Battery</b>	Index
All dimensions in mm	Generaltolerances	Erst. / Orig	20.07.2021		
Als Betriebsgeheimnis anvertraut, alle Rechte vorbehalten	up to 6	· 0,1	Gepr./check	20.07.2021	Guo Daxia
	over 6	· 0,2	Benennung/ Designation		Zchng. / Dwg. Nr.
Proprietary data, company confidential, all rights reserved.	up to 30	· 0,3	LP253058		3
	up to 100	· 0,5	Origin:		FD_3058_25
				support@lipolbattery.com	www.LiPolBattery.com