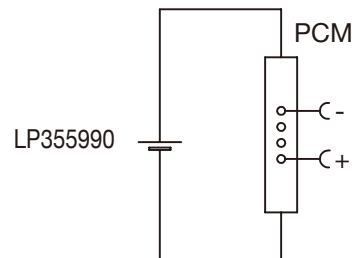


Circuit diagram



Specification

Lithium Polymer Battery Pack LP355990 2400mAh 3.7V with Protection Circuit Module (PCM)
This data sheet describes the requirements and properties of lithium polymer rechargeable battery pack manufactured by LiPol Battery Co., Ltd - China

Mechanical Characteristics

Cell	▶ LP355990
PCM	▶ Yes
NTC	▶ No
Configuration	▶ 1S1P
Weight	▶ appr. 48g
Connector	▶ JST PHR-2

Electrical Specification

Rated Capacity	▶ 2400mAh min, 2430mAh typ.
Nominal Voltage	▶ 3.7V
Wat-Hour Rating	▶ 8.88Wh
Max. Operating Voltage Range	▶ 2.75V to 4.20V
Max. Charge Voltage	▶ 4.2V ±50mV
Max. Charge Current	▶ 1200mA
Standard Charge Current	▶ 480mA
Max. Continuous Discharge Current	▶ 2400mA
Standard Discharge Current	▶ 1200mA
Discharge Cut Off	▶ 2.75V
Internal Impedance	▶ <200mΩ
Expected Cycle Life @ (0.5C/0.5C) @ 23±5°C	▶ 500 cycles ≥ 80%

Cell Protection

Overcharge Detection	▶ 4.275 ±50mV (0.7 to 1.3sec. delay, release 4.275V ±50mV)
Overdischarge Detection	▶ 2.75V ±50mV (14 to 26msec. delay, resume 2.50V ± 50mV)
Overcurrent Detection	▶ 4A to 4.5A (8 to 16msec. delay)

Ambient Conditions

Charge Temp. Range	▶ 0 to +45°C
Discharge Temp. Range	▶ -20 to +60°C
Storage Temp. Range	▶ 1 year at -20 to +30°C >70%
	▶ 3 months at -20 to +45°C >70%
	▶ 1 month at -20 to +60°C >70%
Humidity	▶ 65 ±20%RH

Environmental and Safety

Please follow LiPol Handling and Safety Precautions for Lithium Polymer Battery. This battery meets the requirements of Battery Directives, and the battery parts are IEC62133-2-2017 & RoHS-Compliant. For more safety precautions and performance standards, please go to www.lipolbattery.com/support.html

Mae in mm All dimensions in mm	Freimatoleranzen Generaltoleranzen	Date 20.08.2021	Name Xie Qingfang	LiPol Battery
Als Betriebsgeheimnis anvertraut, alle Rechte vorbehalten	up to 6 : 0,1 over 6 up to 30 : 0,2	Erst. / Orig 20.08.2021	Gepr./Check Guo Daxia	
Proprietary data, company confidential, all rights reserved.	over 30 up to 100 : 0,3 over 100 : 0,5	Benennung/ Designation LP355990		
		Zchng. / Dwg. Nr. 3 FD_5990_35		
		Index		
		support@lipolbattery.com		www.LiPolBattery.com