

Specification

Lithium Polymer Battery Pack LP702040 550mAh 3.7V with Protection Circuit Module (PCM)
 This data sheet describes the requirements and properties of lithium polymer rechargeable battery pack manufactured by LiPol Battery Co., Ltd - China

Mechanical Characteristics

Cell	▶ LP702040
PCM	▶ Yes
NTC	▶ 103AT-2
Configuration	▶ 1S1P
Weight	▶ appr. 11g

Electrical Specification

Rated Capacity	▶ 550mAh min, 560mAh typ.
Nominal Voltage	▶ 3.7V
Wat-Hour Rating	▶ 2.04Wh
Max. Operating Voltage Range	▶ 2.75V to 4.20V
Max. Charge Voltage	▶ 4.2V ±50mV
Max. Charge Current	▶ 275mA
Standard Charge Current	▶ 110mA
Max. Discharge Current	▶ 550mA
Standard Discharge Current	▶ 275mA
Discharge Cut Off	▶ 2.75V
Internal Impedance	▶ <200mΩ
Expected Cycle Life @ (0.5C/0.5C) @ 23±5°C	▶ 500 cycles ≥ 80%

Cell Protection

Overcharge Detection	▶ 4.275 ±50mV (0.7 to 1.3sec. delay, release 4.275V ±50mV)
Overdischarge Detection	▶ 2.75V ±50mV (14 to 26msec. delay, resume 2.50V ±50mV)
Overcurrent Detection	▶ 2A to 2.5A (8 to 16msec. delay)

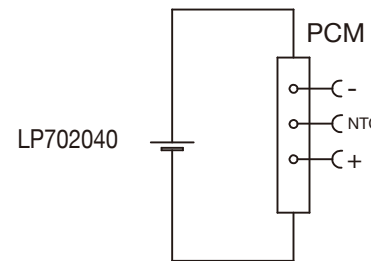
Ambient Conditions

Charge Temp. Range	▶ 0 to +45°C
Discharge Temp. Range	▶ -20 to +60°C
Storage Temp. Range	▶ 1 year at -20 to +30°C >70%
	▶ 3 moths at -20 to +45°C >70%
	▶ 1 month at -20 to +60°C >70%
Humidity	▶ 65 ±20%RH

Environmental and Safety

Please follow LiPol Handling and Safety Precautions for Lithium Polymer Battery. This battery meets the requirements of Battery Directives, and the battery parts are IEC 62133 & RoHS-Compliant. For more safety precautions and performance standards, please go to www.lipolbattery.com/support.html

Circuit diagram



Mae in mm All dimensions in mm	Freimatoleranzen	Date	Name	+ LiPol Battery	
	Generaltoleranzen	Erst./ Orig	29.06.2021		Xie Qingfang
Als Betriebsgeheimnis anvertraut, alle Rechte vorbehalten	up to 6	· 0,1	Gepr./Check	29.06.2021	Guo Daxia
	over 6 up to 30	· 0,2	Benennung/ Designation		
Proprietary data, company confidential, all rights reserved.	over 30 up to 100	· 0,3	LP702040		Zchnng. / Dwg. Nr.
	over 100	· 0,5	Origin:		1 FD_3245_20
				support@lipolbattery.com	www.LiPolBattery.com